

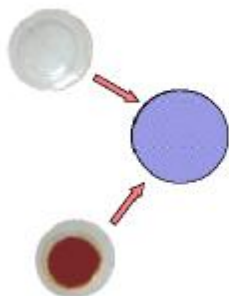
LifeWave Technology

IS...

New Nanotechnology product
Signal Induction System
A Non-Transdermal Patch
Nothing Enters the Body
**Improves Energy & Stamina -
Increases of 40%+ typical
Increase Resting Calorie
Expenditure - Average 40%
Patch message: "Burn Fat"**
Wear All Day (12 hours)
Clinically Tested
Proven Success in Real Life
Near Instant Results
Produces Natural Energy

IS NOT...

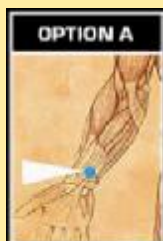
A Magnet
Uses No Metals or Batteries
Contains No Drugs
Contains No Electronics
Not A Medical Device
Not a Supplement
Not a Stimulant
Not a Transdermal Patch



What is Signal Induction?

- > Signal induction is recognized as a biochemical process
- > LifeWave Technology utilizes the principle of signal induction to influence a cells behavior
- > Instead of a signal being produced chemically, LifeWave produces the signal passively
- > This is no different than how our wireless technologies (cell phones, etc.) work today

Patch Placement



WHITE
on **Right**

TAN
on **Left**

For best
results
use every
other day.



Do not use
more than
one set
of patches
on the body
at a time.



LIFEWAVE

ENERGY ENHANCER

Retail: **\$89.95** month supply.

Distributor Opportunity

Purchase Products Wholesale
Outstanding Income Potential

Information Please contact:



Rev Janice W Soarēs

Holistic Alternatives®



623-930-7297

Outside Local Area - Toll Free

866-930-7297

e-✉: holistic.alternatives@cox.net

Websites:

www.LifeWave.com/HolisticAlts

www.holistic-alternatives.net



Nanotechnology... Software for the Human Body

**Increase Your Energy
Improve Stamina
and
Burn Body Fat**

**NO
CHEMICALS**

**NO
STIMULANTS**

ALL NATURAL

LifeWave Technology
is a simple to use,
extremely effective,
non-transdermal
patch.



www.LifeWave.com/HolisticAlts



LifeWave Premise

Pulsating magnetic and electro-magnetic fields emanate from the surface of the human body; energy fields detectable by SQUID magnetometers and infrared imaging.

- ◆ These fields pass through the patches causing the organic lattice to vibrate
- ◆ The patches are constructed from amino acids, sugars and Oxygen in water based solutions; a proprietary process alters the optical properties of the materials
 - ◆ L-amino: light bends left
 - ◆ R-sugar: light bends right
 - ◆ LifeWave process creates circular polarization of light
- ◆ This organic lattice, when applied to a substrate, functions as a molecular antenna for interacting with the human energy field.



LifeWave Patch Construction

The patches are constructed so as to form molecular antennas capable of transmitting biological messages

Try it for yourself...
You'll feel the difference!

- ◆ The human magnetic field is "frequency modulated" (much in the same way that radio works) by the patches to now contain the information "make energy from fat."
- ◆ This modified signal is inserted into the patch wearer by resonant energy transfer.
- ◆ The cells of the body receive this signal (much like signal induction) and the instructions are carried out.

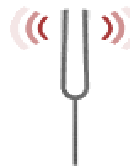
LifeWave Patch antennas frequency modulate human infrared emissions for patch to user communications.



How does this message get to the body if the patch is passive?

Answer:

Resonant Energy Transfer



Example: Tuning Forks

- ◆ Tuning forks are a good example of how vibrating objects produce sound. Oscillation of high and low pressure regions in air
- ◆ Sound waves in liquids are longitudinal; particles vibrate in a direction that is parallel to the direction of energy transport
- ◆ Energy is transmitted without moving matter (matter vibrates but returns to its original locations).

Place two tuning forks of the same frequency near one another. Strike one of the tuning forks. The second tuning fork will vibrate and sound because of resonant energy transfer.

The same phenomenon occurs in ALL materials; if we create a resonant frequency a material such as a biological structure (DNA) will resonate.

LifeWave Research Studies

Scientific paper summarizing findings by inventor David Schmidt

Review by Dr. Steven Haltiwanger, MD: the scientific basis for

LifeWave from a medical doctor's perspective

Double Blind Study: J. Goodson
Strength Endurance

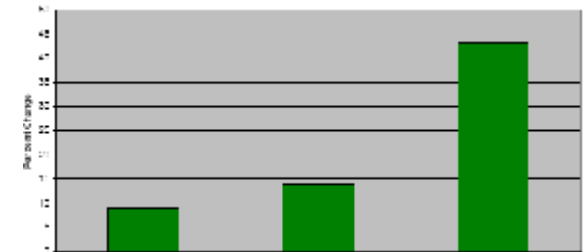
Double Blind Studies: R. Shaughnessy
Strength Endurance

Pilot Study: Surface Electromyography, Biocoherence

Pilot Study: Indirect Calorimetry, Resting Metabolic Rate

Other studies at various stages: Blood work, Capnometer, HRV

Double Blind Studies Shaughnessy: Strength Endurance



- ◆ 25 male college football athletes
- ◆ Exercise for this test - 225 lb. Bench Press
- ◆ Baseline and comparative data collected a week apart
- ◆ 1. Control Group – average increase in stamina of 8.9%
- ◆ 2. Placebo Group – average increase in stamina of 13.8%
- ◆ 3. **LifeWave Group – average increase in stamina of 43.2%**

Endorsements (just a few, among so many)

Members of the 2004 US Olympic Team
 Members of the USPS Tour de France, 2004 LPGA Tour Professionals, and Seniors
 Larry Foyt Foyt - Nascar Team. AJ Foyt's son.
 Peter Vidmar – 1984 Olympic Gold Gymnast
 Randy Jones, MLB Nat'l League Cy Young Award Winner